



Polígono Tejerías – C/ San Lázaro S/N.  
26500 . CALAHORRA (La Rioja) ESPAÑA  
Tel. 0034.941 147653 - 136009  
Fax. 0034.941 14851  
[frucosol@frucosol.com](mailto:frucosol@frucosol.com)

## USER'S MANUAL

**Orange juicer**

**MODEL F-10**



## **USER'S MANUAL**

PLEASE READ CAREFULLY THIS MANUAL BEFORE WORKING WITH THE MACHINE.

### **1. GENERAL INFORMATION**

This machine is mostly made in stainless steel. It is a rough machine, corrosive resistant and very easy to clean.

In a few seconds you will enjoy with fresh, tasty and delicious juice.

It is mainly thought to be put in hotels, inns, bars, food stores, supermarkets, restaurants, caterings, ...

#### **1.1 TECHNICAL DATA**

**Weight:** 15.2 Kg.

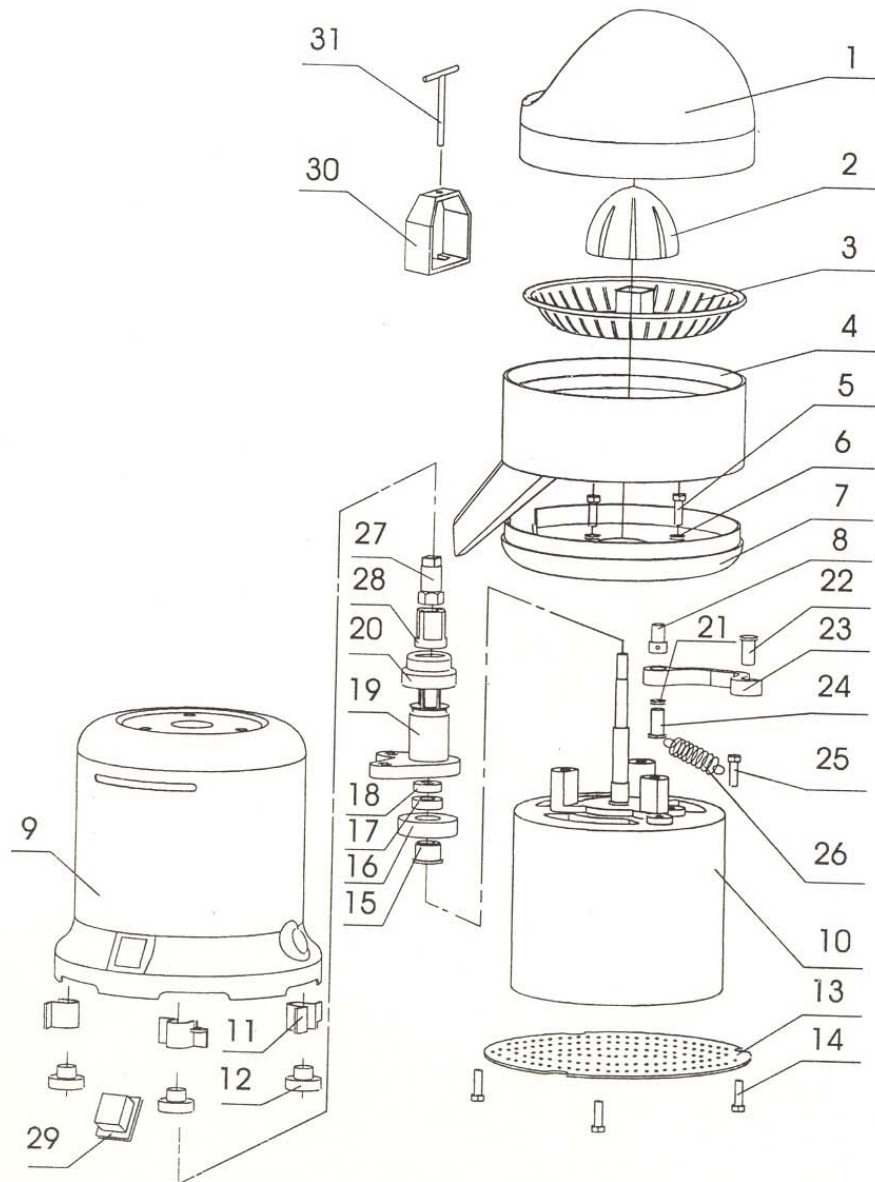
**Height:** 40 cm.

**Base:** 24 cm.

Consumption and energy: 220 V, 50 Hz      1500 RPM      180 W.

ATTENTION: PLEASE MAKE SURE THAT THE LOCAL SUPPLY OF ENERGY IS SUITABLE FOR THE MACHINE.

## 2. Disassembly drawing and part lists



1. Top Cover
2. Squeezer head
3. Filter
4. Protection body
5. Bolt, screw
6. Washer
7. Plate
8. Screw
9. Protection cover of the motor
10. Motor
11. Block leg
12. Block
13. Protection net
14. Screw
15. Sleeve
16. Bearing
17. Bearing
18. Bearing
19. "arm"
20. Seals
21. Washer
22. Screw
23. Vibrator arm
24. Tight bolt
25. Pin
26. Spring
27. Pin
28. Lock sleeve
29. Switch
30. Removing tool
31. Handle

### **3. HOW TO MAKE JUICES**

Before turning the machine on, check that electronic power is 220 V and 50 Hz, and that power socket has an earth wire (the resistance of the ground has to be no more than 0.1 Ohm).

After that check that the protection body and filter are fitted and no part is loosen.

Turn the machine one and confirm it works.

Put a container or a glass under the exit of juice.

Cut the orange into two halves (it is recommended to wash before the fruit), take one of them and push down the squeezer head. Then fresh juice will come out.

### **4. CLEANING OF THE MACHINE**

After using the machine, switch it off and disconnect it from the socket.

Remove all the pieces that are in contact with the juice including the top cover, protection body, filter, squeezer head, ... and clean it with water carefully.

To remove the filter you should use a special tool, with a clockwise rotary movement. This tool is not necessary when assembling the filter.

With the help of a wet piece of cloth, clean the supper plate.

## 5. ADVISES

Keep the juicer in horizontal position.

If the machine is over heat, please stop working for a period of 10/15 minutes. After the temperature has been decreased you can start to work again.

Avoid any liquid gets into contact with the motor.

If you have to move the machine, hold it by the motor or body of the machine; never pull the plate or top cover.

The machine doesn't need any oil or lubricant material. Do not use spare parts from other company. If maintain is needed, please contact with the sales representative or the factory itself.

Do not wet the machine and do not touch the switch or power socket with wet fingers.

# **STATEMENT OF AGREEMENT OF THE EC**

FRUCOSOL  
Polígono Tejerías C/ San Lázaro, s/n  
26500-CALAHORRA (La Rioja) ESPAÑA

## **DECLARE THAT THE DESIGN AND PRODUCTION OF THE MACHINE:**

**Machine:** \_\_\_\_\_ Juicer

**Model:** \_\_\_\_\_ F-10

**Manufacturer:** \_\_\_\_\_ FRUCOSOL

**Nº SERIE:** \_\_\_\_\_

**AÑO DE CONSTRUCCIÓN:** \_\_\_\_\_

## **APPLIED DIRECTIVES:**

LOW VOLTAGE DIRECTIVE EC – (73/23/EECC & 93/687EEC)

DIRECTIVE EMC (89/336/EEC)

## **APPLIED HARMONIZATION RULES:**

BRITISH STANDARD EN 292-1

BRITISH STANDARD EN 292-2

## **NATIONAL SPECIFICATIONS AND APPLIED TECHNICAL RULES:**

EN60335, EN60335-2-64, EN60555, EN55014, EN50082

SIGNED:



Calahorra, \_\_\_\_\_ de \_\_\_\_\_ de 20\_\_\_\_.